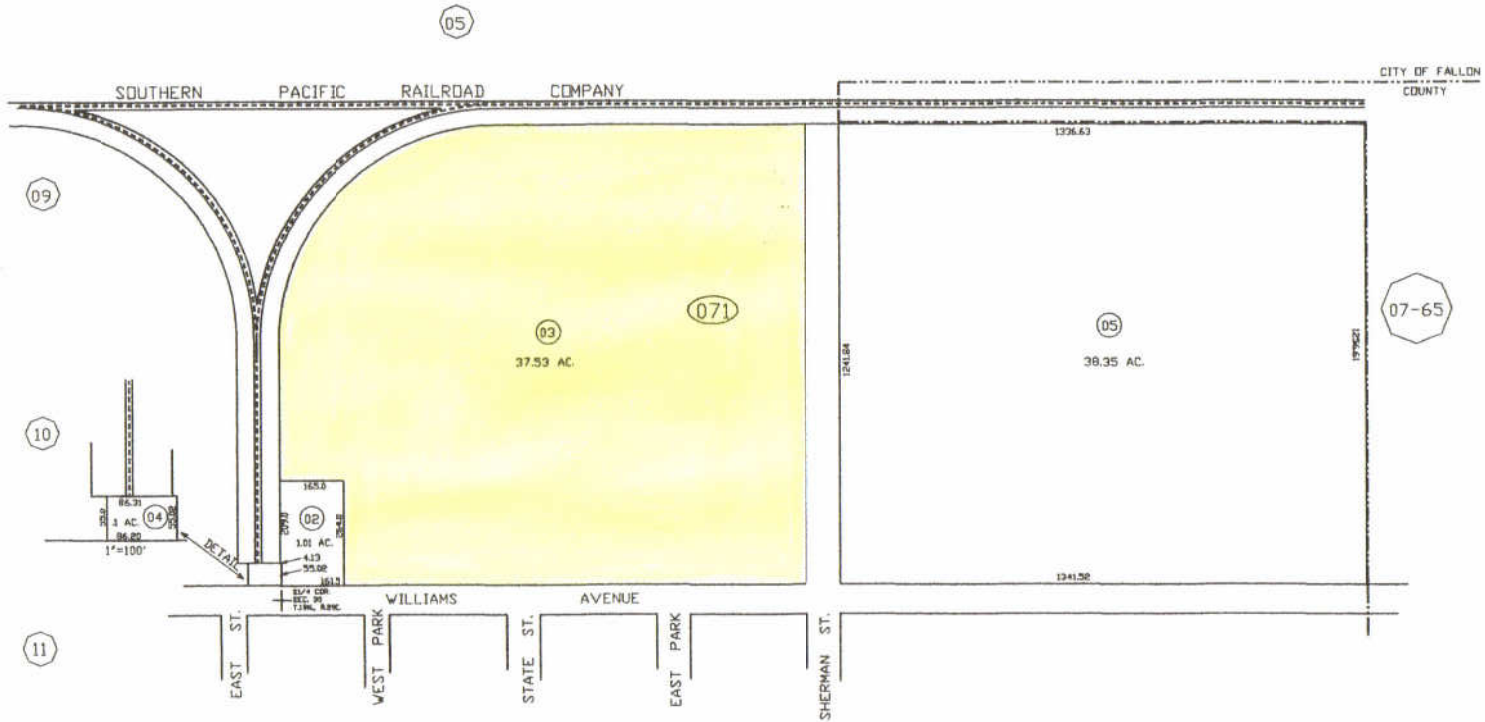


01-07



OATS UNPLATTED

19 N. TOWNSHIP

29 E. RANGE

30 SECTION

NOTE: This plat is for assessment use only and does not represent a survey. No liability is assumed for assessment purposes is definitely not recommended and Churchill County expressly disclaims any liability for use other than for assessment purposes.

LEGEND

ZONING	---
ELLIPSE	○
BRACKET	[]
PARCEL #	○
ROAD	—
EASEMENT	- - - -

ZONE PER CITY MAP

LAST REVISED: JULY 13, 2006

STATE OF NEVADA
 COUNTY OF CHURCHILL
 REVISED BY:
 ASSESSOR
 FISCAL YEAR
 2006/2007

1"=300'
 01-07