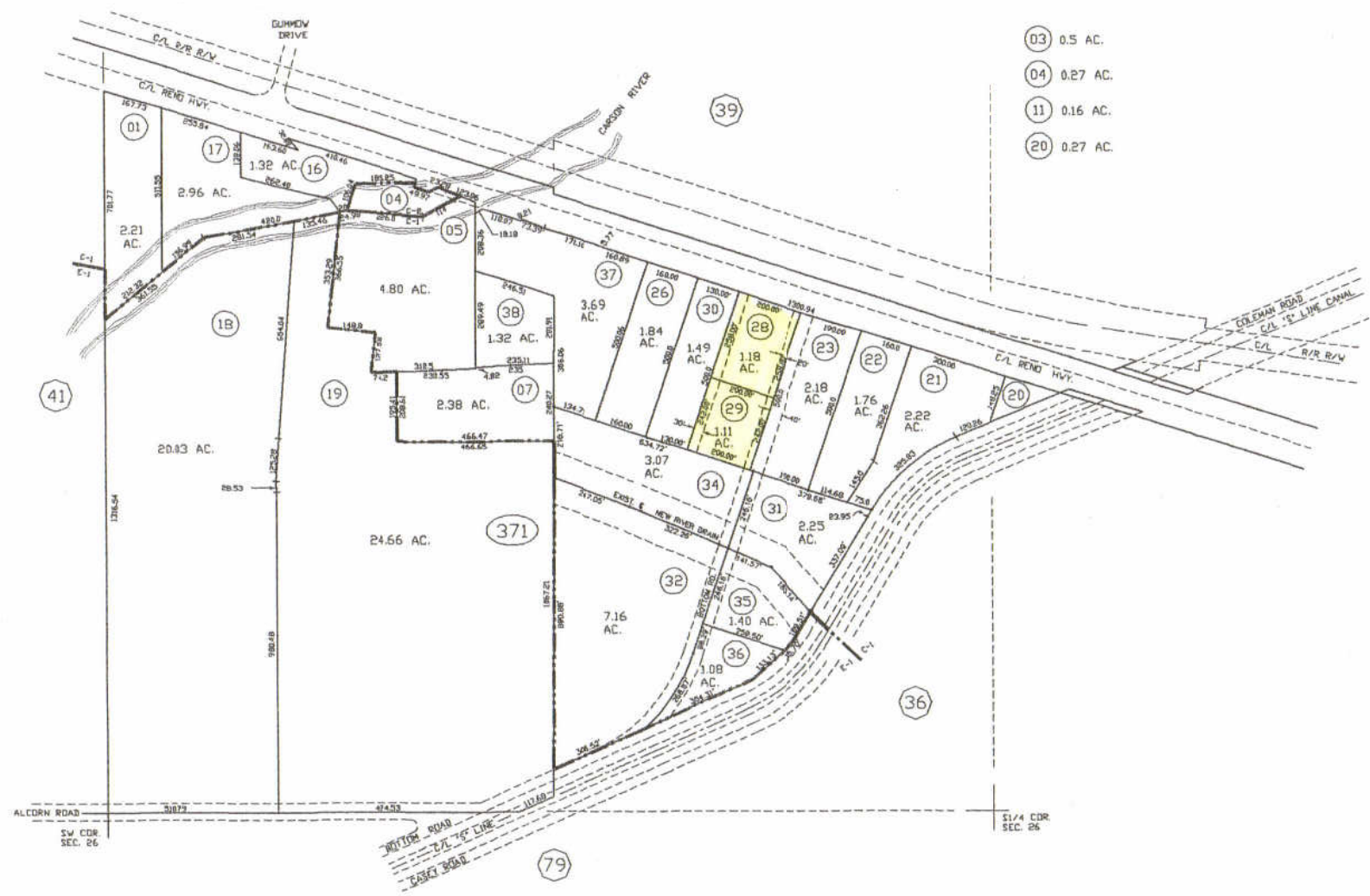




- 03 0.5 AC.
- 04 0.27 AC.
- 11 0.16 AC.
- 20 0.27 AC.



TOWNSHIP RANGE SECTION

19 N. 28 E. 26

LEGEND

- ZONING
- ELLIPSE
- BRACKET
- PARCEL #
- ROAD
- EASEMENT

ZONE
C-1, C-2, & E-1

LAST REVISED:
JULY 19, 2006

STATE OF NEVADA
COUNTY OF CHURCHILL
REVISED BY:
ASSESSOR

FISCAL YEAR
2006/2007

1" = 300'
INCH ON 11" x 17" PAPER
08-37

SCALE CORRECT WHEN PRINTED ON 11" x 17" PAPER.
THE LINE BELOW THIS TEXT IS 1" FROM THE LEFT MARGIN.

NOTES: This map is for informational use only and does not represent a warranty. No liability is assumed on the accuracy of the data presented herein. Use of this map for other than assessment purposes is strictly not recommended and Churchill County expressly disclaims any liability for any other uses or assessment purposes.